

ALABAMA, MISSISSIPPI

Alabama, Mississippi is the first chant I learned from Tracey, Rhonda, Brenda, Karen, and Ronda, the five little girls who were to share their repertoire of games and songs with me at the Hartwell School in Lincoln, Massachusetts.

Al - a - ba - ma Mis - sis - sip - pi, Al - a - ba - ma New Or -

leans, Al - a - ba - ma, num - ber one, you're gon - na

work it, work it, work it, work it, ba - by.

The musical notation is in 2/4 time, key of B-flat major. It consists of three staves. The first staff contains the melody for the first line of lyrics. The second staff contains the melody for the second line of lyrics, including two triplet markings. The third staff contains the melody for the third line of lyrics, ending with a repeat sign.

Repeat as many times as desired, changing the number each time to two, three, etc.

It was exciting for me when I traveled to Memphis to watch the children at the Alcy School play this game. If it is sung in Boston and Memphis, then it must also be known in other parts of the country.

In Memphis, the rhythm is more syncopated and the lowered seventh, characteristic of the blues, is added.

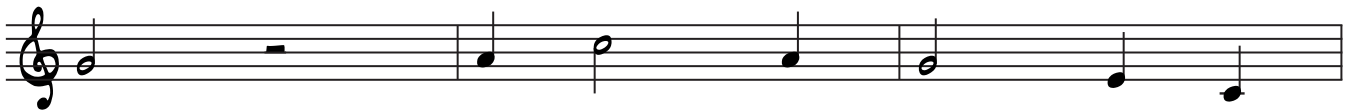
The musical notation consists of three staves. The first staff shows a syncopated melody. The second staff includes two triplet markings. The third staff ends with a repeat sign. A large, faint watermark reading 'Boston's Path Publications' is visible in the background.

WINSTON

An amusing example of the wedding of television and folk cultures. Sometimes the children precede this Winston cigarette commercial by singing the theme song from the TV show, *The Beverly Hillbillies*.



Win-ston tastes good like a cig - a - rette



should, Win-ston tastes good like a



oo ah, I wan-na piece of pie, Pie too sweet, I



wan-na piece of meat, Meat too tough, I wan-na ride a bus,



bus too full, I wan-na ride a bull, bull too black, I wan-na go back.

